

AOSCA Certification Process cont.

B. Field/Nursery Production

Stock seed or plants for establishing certified field/nursery production must be of an eligible generation and have appropriate labeling.

Certification procedures include:

- Application for Certification
- Verification of origin and generation of planting stock
- Seedling inspection
- Field inspection before harvest to check compliance with species requirements for isolation and genetic purity (control of prohibited and other specified weeds or other species may be required)
- Tagging of the seed lot after compliance with applicable requirements and standards; seed purity and viability analysis may be required



UTAH CROP IMPROVEMENT ASSOCIATION

4588 Old Main Hill
Logan, Utah 84335
Phone: 435 797-2082
Fax: 435 797-3376
E-mail: ucia@usu.edu

www.utahcrop.org

UCIA Personnel

- Michael Bouck, 435 881-2058
michael.bouck@usu.edu
- David Brinkerhoff, 435 799-5038
david.brinkerhoff@usu.edu
- Daniel Mills, 308 672-8792
daniel.mills@usu.edu



SEED CERTIFICATION FOR RECLAMATION SPECIES

SOURCE IDENTIFIED SEED



Species Name:	Atriplex canescens
Common Name:	Fourwing Saltbush
Germplasm ID, Gen.:	___ G0
G0 County, State, Elev.:	Duchesne, UT, 5885 ft.
G0 Indigenous? No	Cert. #: WC-6811
G0 Natural Track? No	Lot #: ATCA-D

The seed in this container, with label properly affixed thereto, was produced in compliance with the Seed Certification Requirements and Standards established by the Utah Crop Improvement Association for the SOURCE IDENTIFIED CATEGORY of certified seed. No warranty is expressed or implied as to the fitness for particular purpose or performance of the seed. This tag must be accompanied by a seed analysis label to comply with state and federal seed laws.

•UTAH CROP IMPROVEMENT ASSOCIATION•

•Utah State University, 4855 Old Main Hill, Logan, Utah 84322-4855 (435)797-2082 • www.utahcrop.org

MEMBER OF ASSOCIATION OF OFFICIAL SEED CERTIFYING AGENCIES

Utah Crop Improvement Association (UCIA)

- Third-party official seed certifying agency for Utah since 1937
- Non-profit corporation
- Member, Association of Official Seed Certifying Agencies (AOSCA)
- **VOLUNTARY** participation by seed industry



RECLAMATION VARIETIES

RECLAMATION PRE-VARIETY GERMLASM (PVG)

Certified Seed of Varieties and PVG

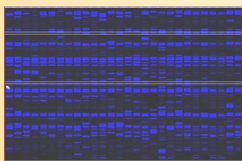
Ensures that:

**What's On The Tag
IS REALLY
What's In The Bag.**

An official seed analysis report does NOT verify the variety or sub-species (or eco-type or local population) of a plant species.

METHODS FOR VERIFYING SEED GERMLASM IDENTITY

- Chemical/DNA—reference benchmarks and green plant samples affect efficiency.



- Grow-Outs—reliable for homogeneous populations; time and logistics are limiting.



- Seed Certification- requires generational proof, field and site inspections, results of seed sampling and analysis; reliable, recognizable, and cost effective.



Evaluation of Methods

	Seed Cert.	Chemical/ DNA	Grow-Outs
Speed	10	5	1
Cost	10	5	1
Reliability	9	9	9
Practicality	9	5	1
Red Tape	5 = 43	9 = 33	5 = 17

Scale: 10 = Best, 1= Worst

CERTIFICATION WINS OUT!



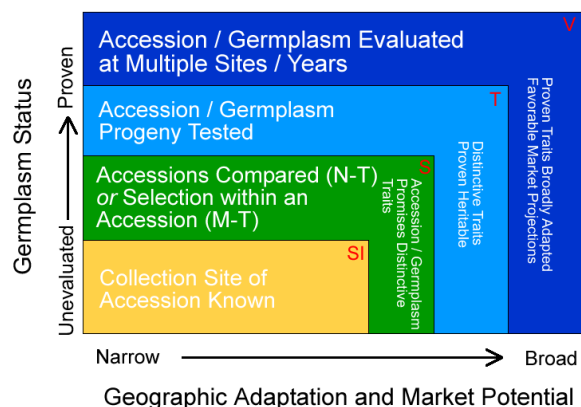
AOSCA Seed Certification Process

A. Wildland Collection

Wildland collected seed can be used for direct sales to end users, for establishment of field/ nursery production, or for entry into plant germlasm development programs. Certification procedures include:

- Pre-Collection Application filed before harvest
- Proper permitting and/or permission for collecting on public and private lands
- Site Identification Log filled out during and after harvest
- Verification of the collection site and identification and evaluation of plant and seed samples before, during, and/or post harvest
- Tagging of the seed lot after compliance with applicable requirements and standards; seed purity and viability analysis may be required
- Germlasm accessions acquired within established protocols of recognized public or private agencies are normally eligible (with appropriate data on file in lieu of the above procedures) to enter the certification process as planting stock

AOSCA Germlasm Development Categories



N-T= Natural Track M-T= Manipulated Track

SI=Source Identified S= Selected Germplasm T= Tested Germplasm V=Variety